

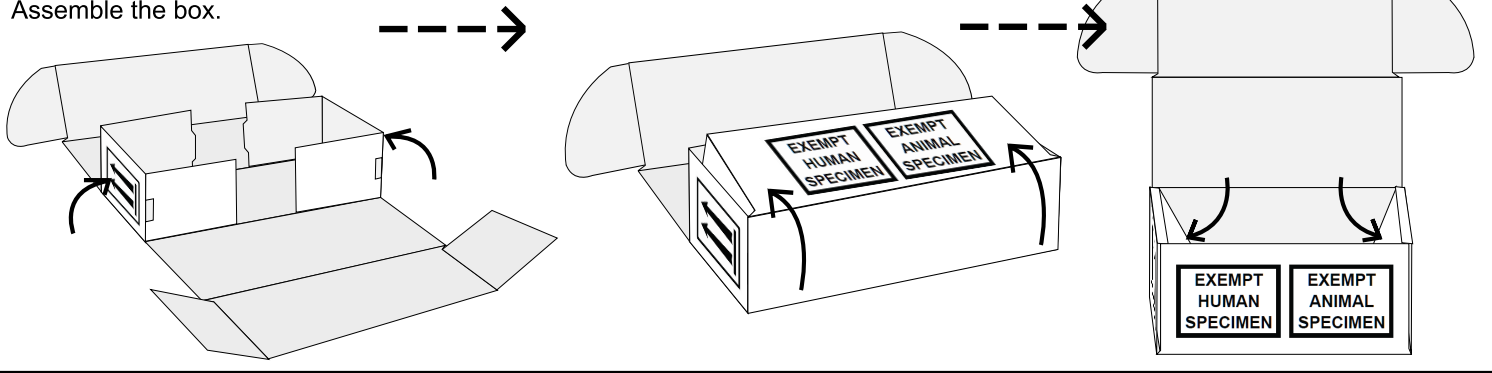
PK-BIO Packing Instruction

Category B / Exempt Specimen Shipping Kit

TC-125-1B

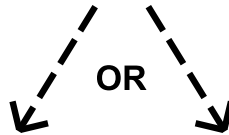
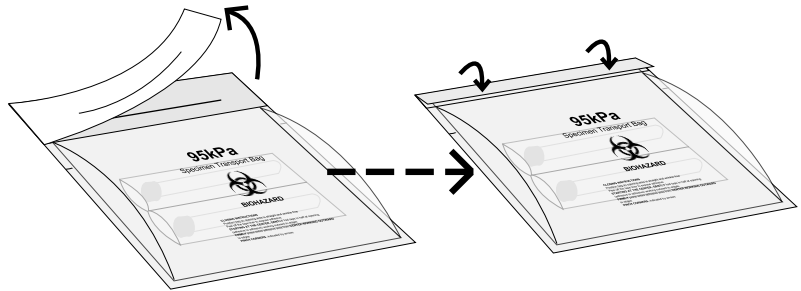
STEP 1:

Assemble the box.



STEP 2:

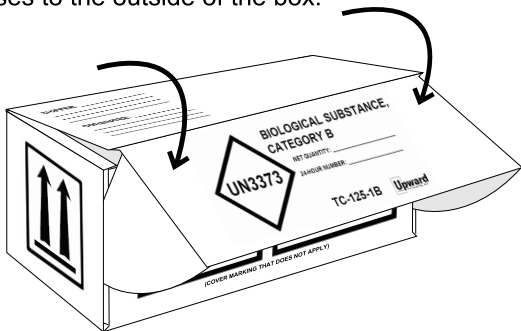
Place inner (water-tight) containers into the 95kPa Specimen Transport Bag along with the absorbent material / pouches. If shipping glass test tubes, insert the test tubes into the absorbent pouches. Seal the 95kPa bag by folding over the adhesive area and pressing firmly over the entire area to remove any bubbles. Requisition paperwork can be placed in the pouch on the back of the 95kPa bag.



Biological Substance, Category B

STEP 3:

Place the 95kPa bag inside of the box and secure with bubble wrap. Close the box by inserting the dust flaps and secure with tape along the bottom edge. Add the Net Quantity, 24-Hour Number, and Shipper/Consignee addresses to the outside of the box.



Exempt Human / Animal Specimen

STEP 3:

Place the 95kPa bag inside of the box and secure with bubble wrap. Tear off the dust flaps and close box by tucking the top flap into the box. Seal box with tape. Add Shipper/Consignee addresses to the outside of the box. Cover up the marking that does not apply.

